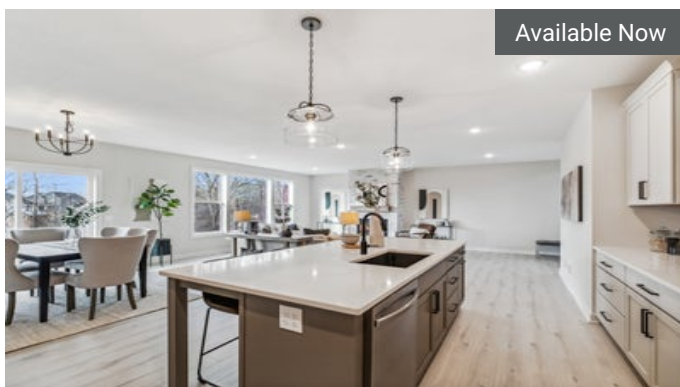


BLAINE, MN

# Oakwood Ponds

## ★ COMMUNITY FEATURES

- 20 minutes from Minneapolis
- Near to local parks, shopping, dining, recreation and more
- Close access to I-35W and MN-65
- Wetlands and nature scenery



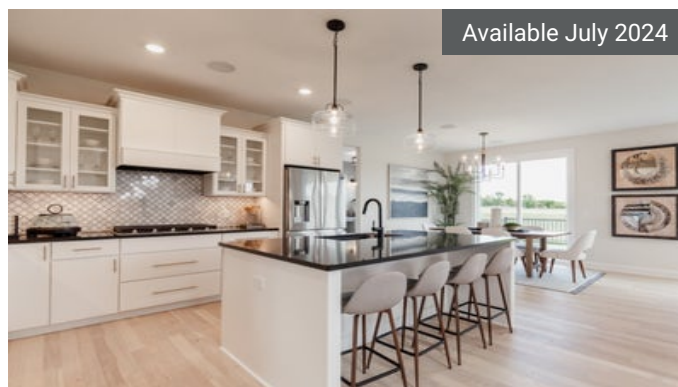
Available Now

4640 128th Cir NE  
Blaine, MN

\$749,900

The Middleton Floorplan

	
5	3.5
	
3	4,271



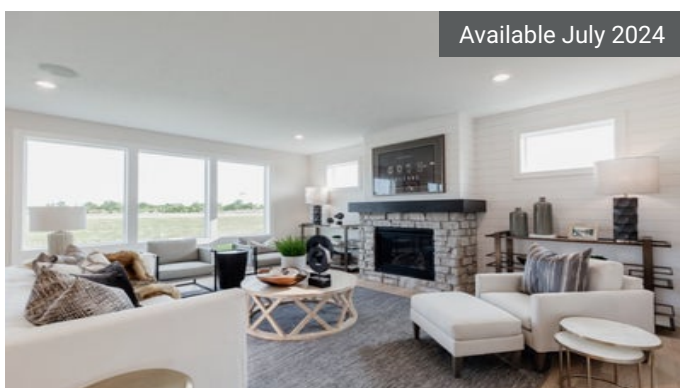
Available July 2024

12775 Stutz Ct  
Blaine, MN

\$679,900

The Sutherland Floorplan

	
5	3.5
	
3	3,614



Available July 2024

4855 128th Cir NE  
Blaine, MN

\$699,900

The Sutherland Floorplan

	
4	4.5
	
3	3,538