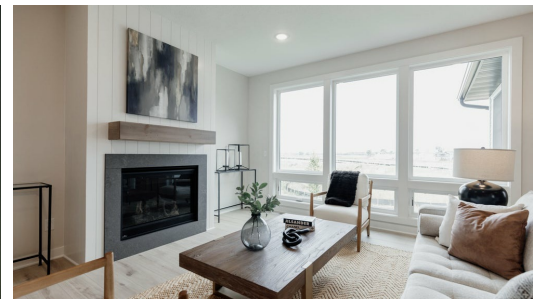
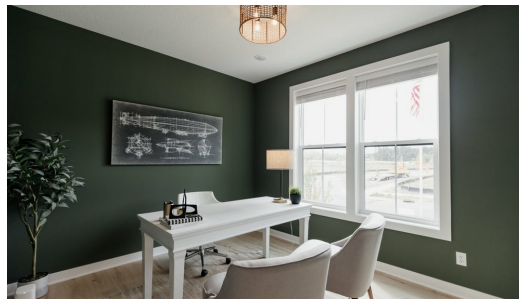
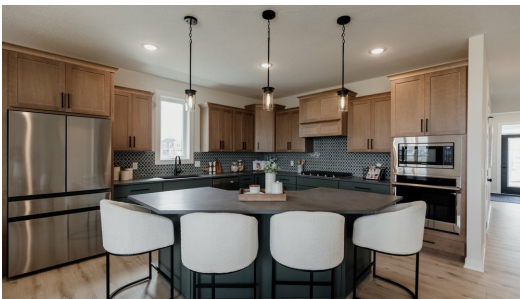


Available January 2025



Step into the Riley

Welcome home to the Riley! A stunning open concept home with everything you need on the main level. The primary suite has convenient access to the laundry room and mud room through the spacious walk-in closet. The basement is a spacious area to do as you please with this plan.

ADDRESS

13117 Hupp Ct NE
Blaine, MN 55449

PRICE

\$624,411

COMMUNITY

Lexington Waters

FLOORPLAN

Riley

PLAN DETAILS

3 Bedroom

3 Baths

2 Car Garage

1 Stories

3,290 Sq.Ft.