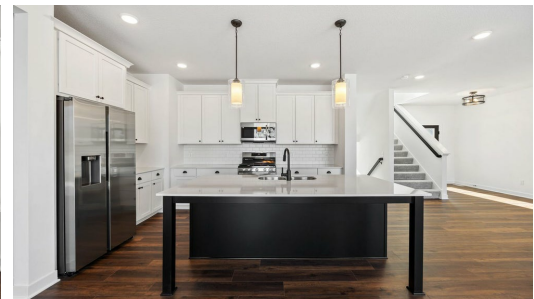
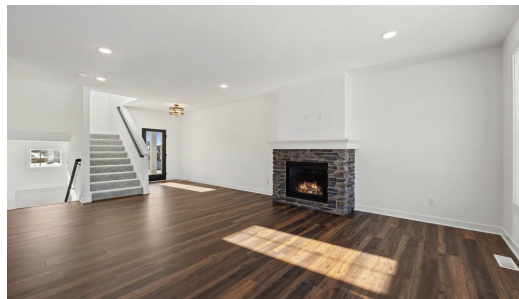
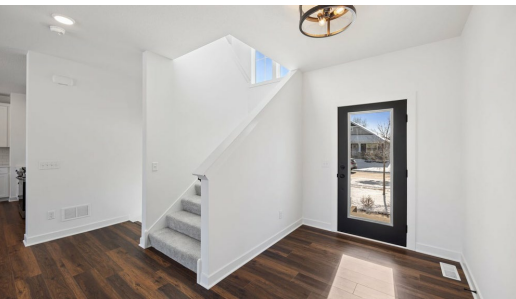


Available Now



Step into the Aspen

Step into the Aspen to be greeted by a two-story foyer that opens up into the great room and kitchen area that is flooded by natural light from the plethora of windows along the back wall. The kitchen offers plenty of space alongside the walk in pantry. Step upstairs to find a spacious owners suite, two additional bedrooms, a second bathroom, the laundry room, and a loft. With plenty of space to grow in the lower level, this floor plan is just as lovely as it is spacious!

ADDRESS

4714 128th Cir NE
Blaine, MN 55449

PRICE

\$649,900

COMMUNITY

Oakwood Ponds

FLOORPLAN

Aspen

PLAN DETAILS

4 Bedroom

3 Car Garage

2,222 Sq.Ft.

3 Baths | 1 Half Bath

2 Stories

All prices, promotions, features, options, amenities, floor plans, elevations, materials and dimensions are subject to change without notice. All information is deemed reliable but not guaranteed. Promotion dollars will be applied toward design studio. Promotion varies by community. Talk to new home specialist in the community to learn details. Not to be used toward base price of home, seller's credit, closing cost, and lot premium. Offer valid on purchase agreements signed on new builds executed between the dates of December 4, 2020 and December 31, 2020. Call the Online Sales Counselor at 651-333-4181 for more details or visit a New Home Specialist for further details and important legal disclaimers. Void where prohibited by law. Offers, incentives, and seller contributions are subject to certain terms, conditions, and restrictions. Creative Homes reserves the right to change or withdraw any offer at any time and without notice. Offer may not be redeemed for cash or equivalent. Prices, home-site, and plan availability are subject to change or revocation without prior notice or obligation. Copyright © 2025 Creative Homes. Creative Homes, the Creative Homes logo are US registered service marks or service marks of Creative Homes.