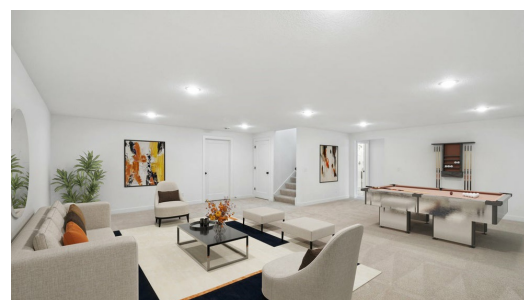


QUESTIONS?
 651-289-6800

Available Now



Move-in ready Riley! A stunning open concept home with everything you need on the main level. The primary suite has convenient access to the laundry room and mud room through the spacious walk-in closet. The basement is a spacious area to do as you please with this plan.

ADDRESS

2133 Westpointe Dr
 Hastings , MN 55033

PRICE

\$529,900

COMMUNITY

Heritage Ridge Villas

FLOORPLAN

PLAN DETAILS

2 Bedroom

3 Baths

2 Car Garage

1 Stories

2,738 Sq.Ft.