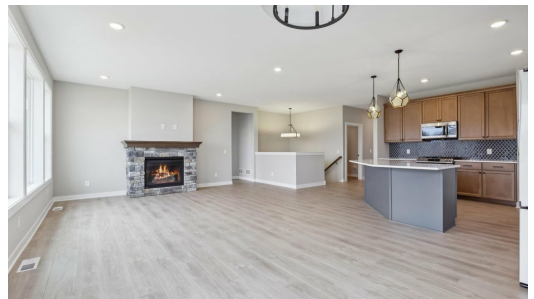




QUESTIONS?  
651-273-1974

Pending



## Step into the Riley

Come home to the Craftsman Riley! A gorgeous rambler style home with incredible natural light coming through large glass windows and an open layout. As you make your way into the foyer, you'll come across a den, bathroom, and a bedroom. The kitchen is the heart of the home with a stunning island, beautiful cabinetry, and a walk-in pantry. The primary suite is also notable in this home with a spacious closet that connects to the laundry room on the main level. Downstairs is a large area to do as ...

### 📍 ADDRESS

5574 130th Way  
Hugo, MN 55038

### 🏘️ COMMUNITY

Adelaide Landing

### 🏠 FLOORPLAN

Riley

### 📋 PLAN DETAILS

🛏️ 3 Bedroom

🚿 3 Baths

🚗 3 Car Garage

🏠 1 Stories

📏 3,275 Sq.Ft.

All prices, promotions, features, options, amenities, floor plans, elevations, materials and dimensions are subject to change without notice. All information is deemed reliable but not guaranteed. Promotion dollars will be applied toward design studio. Promotion varies by community. Talk to new home specialist in the community to learn details. Not to be used toward base price of home, seller's credit, closing cost, and lot premium. Offer valid on purchase agreements signed on new builds executed between the dates of December 4, 2020 and December 31, 2020. Call the Online Sales Counselor at 651-333-4181 for more details or visit a New Home Specialist for further details and important legal disclaimers. Void where prohibited by law. Offers, incentives, and seller contributions are subject to certain terms, conditions, and restrictions. Creative Homes reserves the right to change or withdraw any offer at any time and without notice. Offer may not be redeemed for cash or equivalent. Prices, home-site, and plan availability are subject to change or revocation without prior notice or obligation. Copyright © 2024 Creative Homes. Creative Homes, the Creative Homes logo are US registered service marks or service marks of Creative Homes.