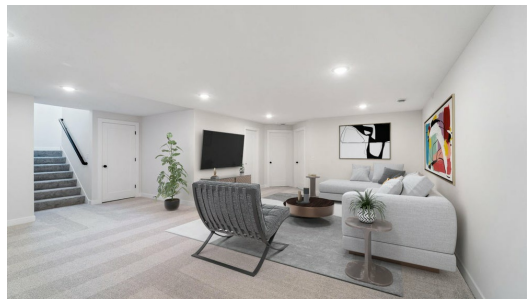


QUESTIONS?
651-273-1974

Available Now



Step into the Aspen

Move-in ready! Step into the Aspen to be greeted by a two-story foyer that opens up into the great room and kitchen area that is flooded by natural light from the plethora of windows along the back wall. The kitchen offers plenty of space alongside the walk-in pantry. Step upstairs to find a spacious owners suite, two additional bedrooms, a second bathroom, the laundry room, and a loft. With plenty of space to grow in the lower level, this floor plan is just as lovely as it is spacious!

ADDRESS

5754 135th St
Hugo, MN 55038

PRICE

\$614,900

COMMUNITY

Adelaide Landing

FLOORPLAN

Aspen

PLAN DETAILS

4 Bedroom

3 Car Garage

3,029 Sq.Ft.

3 Baths | 1 Half Bath

2 Stories