

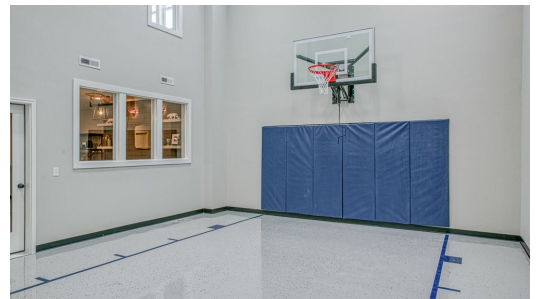
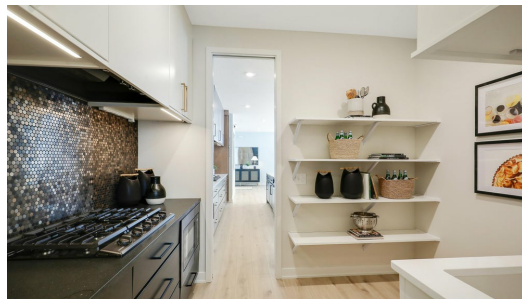
THE CUSTOM FLOORPLAN

5685 Kelvin Ave N



QUESTIONS?
651-504-3360

Available July 2025



Step into the Custom

Coming soon! An incredible custom home featuring a sport court and a four-season porch with a stunning see-through double-sided fireplace. This home offers four bedrooms and three bathrooms upstairs, plus an additional bedroom and bathroom in the lower level along with the sport court. Stay tuned for more details on this exceptional home.

ADDRESS

5685 Kelvin Ave N
Lake Elmo, MN 55042

PRICE

\$1,575,000

COMMUNITY

Hidden Meadows

FLOORPLAN

Custom

PLAN DETAILS

5 Bedroom

4 Baths | 1 Half Bath

4 Car Garage

5,097 Sq.Ft.

All prices, promotions, features, options, amenities, floor plans, elevations, materials and dimensions are subject to change without notice. All information is deemed reliable but not guaranteed. Promotion dollars will be applied toward design studio. Promotion varies by community. Talk to new home specialist in the community to learn details. Not to be used toward base price of home, seller's credit, closing cost, and lot premium. Offer valid on purchase agreements signed on new builds executed between the dates of December 4, 2020 and December 31, 2020. Call the Online Sales Counselor at 651-333-4181 for more details or visit a New Home Specialist for further details and important legal disclaimers. Void where prohibited by law. Offers, incentives, and seller contributions are subject to certain terms, conditions, and restrictions. Creative Homes reserves the right to change or withdraw any offer at any time and without notice. Offer may not be redeemed for cash or equivalent. Prices, home-site, and plan availability are subject to change or revocation without prior notice or obligation. Copyright © 2025 Creative Homes. Creative Homes, the Creative Homes logo are US registered service marks or service marks of Creative Homes.