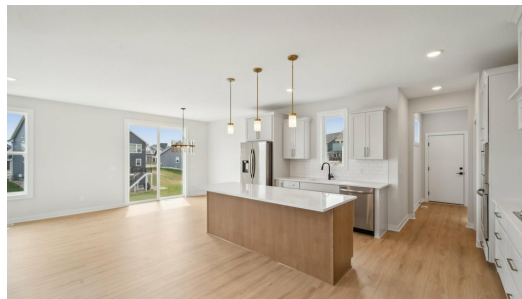
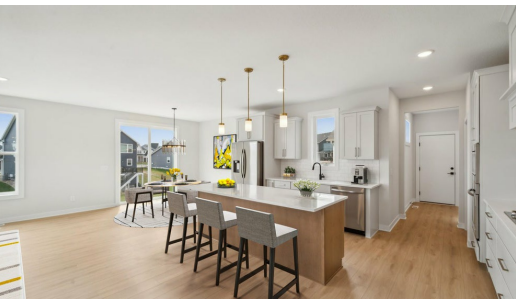




QUESTIONS?
651-237-9157

Available Now



Step into the Gibson

Come home to this walkout Gibson! Offering 5 bedrooms, 3.5 bathrooms, and plenty of space throughout! As you walk in, you'll be greeted by a den and powder bath before entering into the open layout with tons of glass and natural light. Upstairs is very spacious in the Gibson with four bedrooms all with walk-in closets, two full bathrooms, and an office. Notable is the primary suite with a tile shower, soaking tub, dual sinks, and two closets. Lastly, make your way to the walkout basement includes the fifth bedroom, ...

ADDRESS

10707 40th St
Lake Elmo, MN 55042

PRICE

\$769,900

COMMUNITY

Legacy at Northstar

FLOORPLAN

Gibson

PLAN DETAILS

5 Bedroom

3 Car Garage

3,895 Sq.Ft.

3 Baths | 1 Half Bath

2 Stories

All prices, promotions, features, options, amenities, floor plans, elevations, materials and dimensions are subject to change without notice. All information is deemed reliable but not guaranteed. Promotion dollars will be applied toward design studio. Promotion varies by community. Talk to new home specialist in the community to learn details. Not to be used toward base price of home, seller's credit, closing cost, and lot premium. Offer valid on purchase agreements signed on new builds executed between the dates of December 4, 2020 and December 31, 2020. Call the Online Sales Counselor at 651-333-4181 for more details or visit a New Home Specialist for further details and important legal disclaimers. Void where prohibited by law. Offers, incentives, and seller contributions are subject to certain terms, conditions, and restrictions. Creative Homes reserves the right to change or withdraw any offer at any time and without notice. Offer may not be redeemed for cash or equivalent. Prices, home-site, and plan availability are subject to change or revocation without prior notice or obligation. Copyright © 2024 Creative Homes. Creative Homes, the Creative Homes logo are US registered service marks or service marks of Creative Homes.