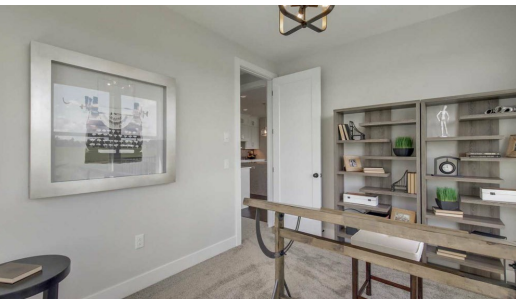




QUESTIONS?
651-237-9157



Step into the Clifton

By appointment only! Step into the Clifton to be greeted by a spacious great room welcoming you in natural light. The stone fireplace serves as the focal point of the living area while the kitchen is outfitted in a quartz waterfalled island with mosaic tile detailed backsplash. Dine on the deck on a warm summers evening or in the dinette! Travel through the kitchen into the mudroom to find an office and a powder bathroom as well. Upstairs, you will find a loft and an exceptional owners suite connected to ...

ADDRESS

10833 38th Trl.
Lake Elmo , MN 55042

PRICE

\$899,900

COMMUNITY

Legacy at Northstar

FLOORPLAN

Clifton

PLAN DETAILS

4 Bedroom

3 Baths | 1 Half Bath

3 Car Garage

2 Stories

3,851 Sq.Ft.

All prices, promotions, features, options, amenities, floor plans, elevations, materials and dimensions are subject to change without notice. All information is deemed reliable but not guaranteed. Promotion dollars will be applied toward design studio. Promotion varies by community. Talk to new home specialist in the community to learn details. Not to be used toward base price of home, seller's credit, closing cost, and lot premium. Offer valid on purchase agreements signed on new builds executed between the dates of December 4, 2020 and December 31, 2020. Call the Online Sales Counselor at 651-333-4181 for more details or visit a New Home Specialist for further details and important legal disclaimers. Void where prohibited by law. Offers, incentives, and seller contributions are subject to certain terms, conditions, and restrictions. Creative Homes reserves the right to change or withdraw any offer at any time and without notice. Offer may not be redeemed for cash or equivalent. Prices, home-site, and plan availability are subject to change or revocation without prior notice or obligation. Copyright © 2025 Creative Homes. Creative Homes, the Creative Homes logo are US registered service marks or service marks of Creative Homes.