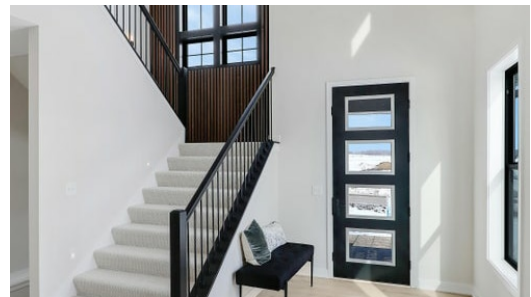
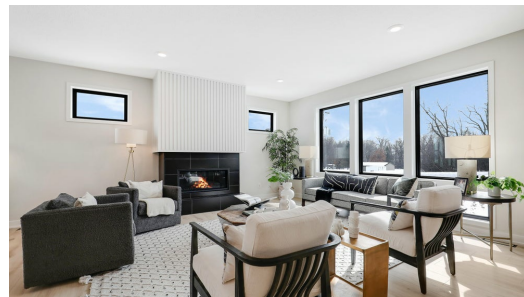




Available October 2024



Step into the Middleton

Personalize now! Step into the Middleton to be greeted by a gorgeous, sunlit foyer. The spacious open layout on the main level comes together with a beautiful kitchen and cozy fireplace. Also notable in this home is the mudroom for its spaciousness and incredible storage. Upstairs you'll find the lovely owners' suite, three more bedrooms, the laundry room, and a loft. The basement includes a family room perfect for entertaining friends and family and another bed and bathroom. Come home to this award-winning floor plan today!

ADDRESS

10145 Shadyview Ln N
Maple Grove, MN
55311

PRICE

\$949,900

COMMUNITY

Evanswood

FLOORPLAN

Middleton

PLAN DETAILS

5 Bedroom

4 Baths | 1 Half Bath

3 Car Garage

2 Stories

4,749 Sq.Ft.

All prices, promotions, features, options, amenities, floor plans, elevations, materials and dimensions are subject to change without notice. All information is deemed reliable but not guaranteed. Promotion dollars will be applied toward design studio. Promotionaries by community. Talk to new home specialist in the community to learn details. Not to be used toward base price of home, seller's credit, closing cost, and lot premium. Offer valid on purchase agreements signed on new builds executed between the dates of December 4, 2020 and December 31, 2020. Call the Online Sales Counselor at 651-333-4181 for more details or visit a New Home Specialist for further details and important legal disclaimers. Void where prohibited by law. Offers, incentives, and seller contributions are subject to certain terms, conditions, and restrictions. Creative Homes reserves the right to change or withdraw any offer at any time and without notice. Offer may not be redeemed for cash or equivalent. Prices, home-site, and plan availability are subject to change or revocation without prior notice or obligation. Copyright © 2024 Creative Homes. Creative Homes, the Creative Homes logo are US registered service marks or service marks of Creative Homes.