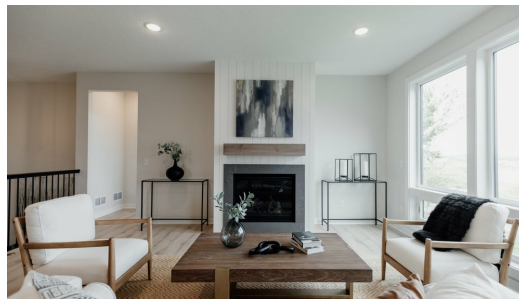
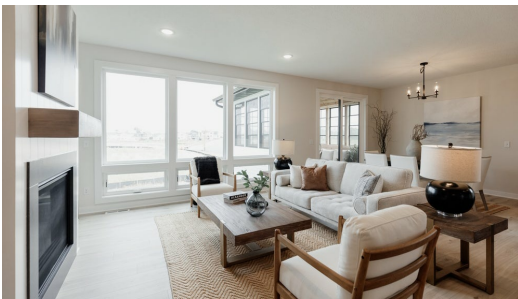


Available February 2025



## Step into the Riley

Welcome home to the Riley! A stunning open concept home with everything you need on the main level. Gorgeous large windows with tons of natural light, a charming kitchen, and extra wide staircase. The primary suite has convenient access to the laundry room and mud room through the spacious walk-in closet. The basement is a spacious area to do as you please with this plan.

### ADDRESS

10196 Queensland Ln  
N  
Maple Grove , MN  
55311

### PRICE

\$829,900

### COMMUNITY

Evanswood

### FLOORPLAN

Riley

### PLAN DETAILS

3 Bedroom

3 Baths

3 Car Garage

1 Stories

3,280 Sq.Ft.