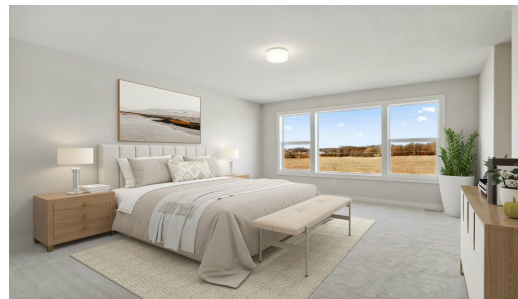
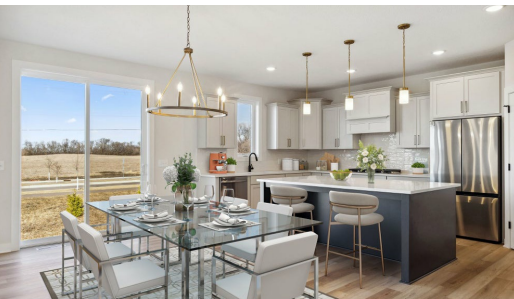


QUESTIONS?
651-433-6065

Available Now



Step into the Sutherland

A stunning open concept home with tons of personalization options to truly make your own! The kitchen, dining, and living space come together with tons of glass and natural light. Upstairs you'll find the laundry room, loft, and four bedrooms. Downstairs includes a spacious family room and fifth bedroom.

ADDRESS

10237 Shadyview Ln N
Maple Grove , MN
55311

PRICE

\$839,900

COMMUNITY

Evanswood

FLOORPLAN

Sutherland

PLAN DETAILS

5 Bedroom

3 Car Garage

3,579 Sq.Ft.

3 Baths | 1 Half Bath

2 Stories

All prices, promotions, features, options, amenities, floor plans, elevations, materials and dimensions are subject to change without notice. All information is deemed reliable but not guaranteed. Promotion dollars will be applied toward design studio. Promotion varies by community. Talk to new home specialist in the community to learn details. Not to be used toward base price of home, seller's credit, closing cost, and lot premium. Offer valid on purchase agreements signed on new builds executed between the dates of December 4, 2020 and December 31, 2020. Call the Online Sales Counselor at 651-333-4181 for more details or visit a New Home Specialist for further details and important legal disclaimers. Void where prohibited by law. Offers, incentives, and seller contributions are subject to certain terms, conditions, and restrictions. Creative Homes reserves the right to change or withdraw any offer at any time and without notice. Offer may not be redeemed for cash or equivalent. Prices, home-site, and plan availability are subject to change or revocation without prior notice or obligation. Copyright © 2025 Creative Homes. Creative Homes, the Creative Homes logo are US registered service marks or service marks of Creative Homes.