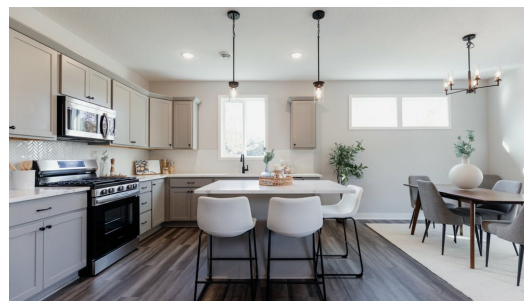
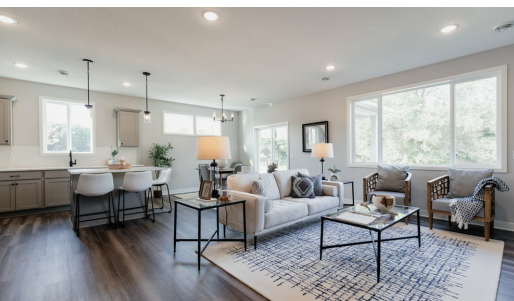




Available July 2025



## Step into the Hudson

The Hudson is a beautiful main-level living home! This home offers a gorgeous open layout with the primary suite and laundry all on the main along with two more bedrooms. As you enter into the foyer, you are greeted by a bedroom/den, a bathroom, and another bedroom. The kitchen, great room, and dinette come together with tons of natural light and an awesome openness feel. The kitchen includes gorgeous cabinetry, quality appliances, and a large island. This home is currently in the paperwork stage and can be personalized accordingly to ...

### ADDRESS

1234 170th Ave NW  
Ramsey, MN 55303

### PRICE

\$396,900

### COMMUNITY

Trott Brook Crossing

### FLOORPLAN

Hudson

### PLAN DETAILS

3 Bedroom

2 Baths

3 Car Garage

1,612 Sq.Ft.

All prices, promotions, features, options, amenities, floor plans, elevations, materials and dimensions are subject to change without notice. All information is deemed reliable but not guaranteed. Promotion dollars will be applied toward design studio. Promotion varies by community. Talk to new home specialist in the community to learn details. Not to be used toward base price of home, seller's credit, closing cost, and lot premium. Offer valid on purchase agreements signed on new builds executed between the dates of December 4, 2020 and December 31, 2020. Call the Online Sales Counselor at 651-333-4181 for more details or visit a New Home Specialist for further details and important legal disclaimers. Void where prohibited by law. Offers, incentives, and seller contributions are subject to certain terms, conditions, and restrictions. Creative Homes reserves the right to change or withdraw any offer at any time and without notice. Offer may not be redeemed for cash or equivalent. Prices, home-site, and plan availability are subject to change or revocation without prior notice or obligation. Copyright © 2025 Creative Homes. Creative Homes, the Creative Homes logo are US registered service marks or service marks of Creative Homes.