


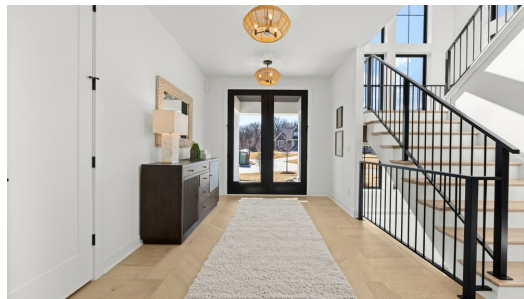
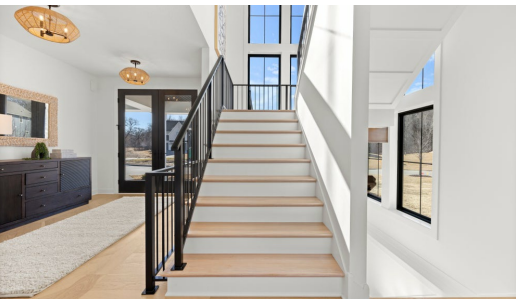
THE NONE FLOORPLAN

1234 Laurie Ct



QUESTIONS?
651-289-6800

Available June 2025



We can build your dream home right here in Roseville! Choose from one of our expertly designed floorplans with plenty of room for personalization or bring us your own design. Pictures are an example of a previously built Riley floorplan. Tucked into this incredible floorplan are four bedrooms, and two and a half bathrooms, and a command center that can double as a great second office, or a craft room for the kids! Walk upstairs to find all bedrooms, the laundry, and a loft with plenty of natural light!

ADDRESS

1234 Laurie Ct
Roseville , MN 55113

PRICE

\$719,900

COMMUNITY

Legacy at Midland Hills

FLOORPLAN

PLAN DETAILS

4 Bedroom

3 Baths

2 Car Garage

2,969 Sq.Ft.

All prices, promotions, features, options, amenities, floor plans, elevations, materials and dimensions are subject to change without notice. All information is deemed reliable but not guaranteed. Promotion dollars will be applied toward design studio. Promotion varies by community. Talk to new home specialist in the community to learn details. Not to be used toward base price of home, seller's credit, closing cost, and lot premium. Offer valid on purchase agreements signed on new builds executed between the dates of December 4, 2020 and December 31, 2020. Call the Online Sales Counselor at 651-333-4181 for more details or visit a New Home Specialist for further details and important legal disclaimers. Void where prohibited by law. Offers, incentives, and seller contributions are subject to certain terms, conditions, and restrictions. Creative Homes reserves the right to change or withdraw any offer at any time and without notice. Offer may not be redeemed for cash or equivalent. Prices, home-site, and plan availability are subject to change or revocation without prior notice or obligation. Copyright © 2025 Creative Homes. Creative Homes, the Creative Homes logo are US registered service marks or service marks of Creative Homes.