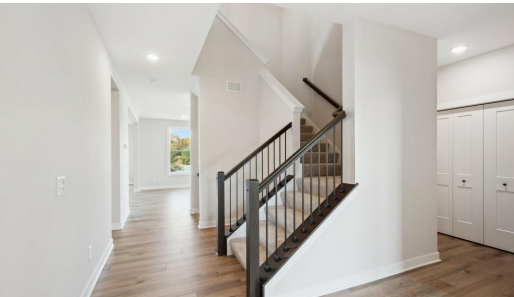


# 10238 Arrowwood Path



QUESTIONS?  
6515083711

Available Now



## Step into the Kendall

When you step into the Kendall, you'll be greeted by a den and grandeur staircase. Pass through the foyer where you will find a spacious great room, kitchen and dinette. The gourmet kitchen is the heart of the home with beautiful cabinetry and a gorgeous island. Upstairs, you will find four bedrooms and two bathrooms. Come home to the beautiful Kendall today!

### ADDRESS

10238 Arrowwood Path  
Woodbury , MN 55129

### COMMUNITY

Briarcroft

### FLOORPLAN

Kendall

### PLAN DETAILS

5 Bedroom

4 Baths | 1 Half Bath

3 Car Garage

2 Stories

3,328 Sq.Ft.

All prices, promotions, features, options, amenities, floor plans, elevations, materials and dimensions are subject to change without notice. All information is deemed reliable but not guaranteed. Promotion dollars will be applied toward design studio. Promotion varies by community. Talk to new home specialist in the community to learn details. Not to be used toward base price of home, seller's credit, closing cost, and lot premium. Offer valid on purchase agreements signed on new builds executed between the dates of December 4, 2020 and December 31, 2020. Call the Online Sales Counselor at 651-333-4181 for more details or visit a New Home Specialist for further details and important legal disclaimers. Void where prohibited by law. Offers, incentives, and seller contributions are subject to certain terms, conditions, and restrictions. Creative Homes reserves the right to change or withdraw any offer at any time and without notice. Offer may not be redeemed for cash or equivalent. Prices, home-site, and plan availability are subject to change or revocation without prior notice or obligation. Copyright © 2024 Creative Homes. Creative Homes, the Creative Homes logo are US registered service marks or service marks of Creative Homes.