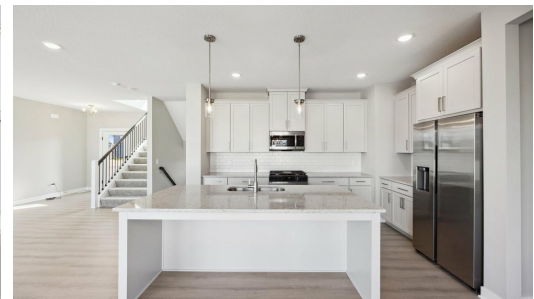


# 10280 Arrowwood Path



QUESTIONS?  
651-369-6111

Available Now



## Step into the Aspen

Step into the Aspen floor plan to be greeted by a two-story foyer that opens up into the great room and kitchen area that is flooded by natural light from the plethora of windows along the back wall. The kitchen offers plenty of space alongside the walk-in pantry. Make your way upstairs to find a spacious owners suite, two additional bedrooms, a second bathroom, the laundry room, and a loft. With plenty of space to grow in the lower level, this floor plan is just as lovely as it is ...

### ADDRESS

10280 Arrowwood Path  
Woodbury, MN 55129

### PRICE

\$649,900

### COMMUNITY

Briarcroft

### FLOORPLAN

Aspen

### PLAN DETAILS

4 Bedroom

3 Car Garage

2,977 Sq.Ft.

3 Baths | 1 Half Bath

2 Stories