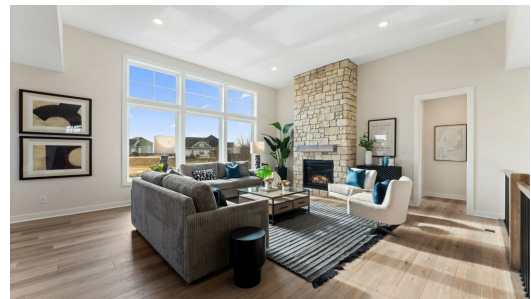
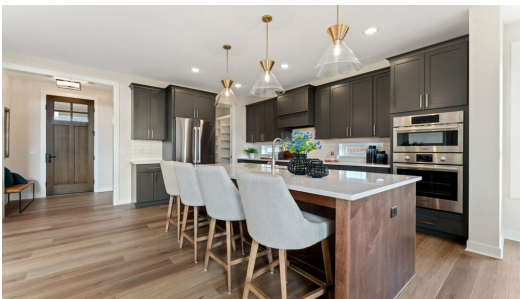


THE CUSTOM FLOORPLAN

# 715 Mount Curve Court



QUESTIONS?  
6123220985



## Step into the Custom

Crafted to captivate, this meticulously designed walkout rambler, developed by the dedicated team at Creative Custom, showcases thoughtful details and exceptional craftsmanship. Featuring four bedrooms and three bathrooms, the home emphasizes main-level livability, providing ample space for entertaining and hosting guests. Nestled on a one-acre lot, the property offers expansive views, generous yard space, and privacy, particularly enjoyed from the screened-in porch and throughout the residence. Natural light floods the interior through oversized windows, creating a bright and airy ambiance, while design elements such as the floor-to-ceiling stone fireplace impart ...

### ADDRESS

715 Mount Curve Court  
Hudson, WI 54016

### PRICE

\$1,050,000

### COMMUNITY

Hills of Troy

### FLOORPLAN

Custom

### PLAN DETAILS

4 Bedroom

3 Baths

3 Car Garage

3,256 Sq.Ft.