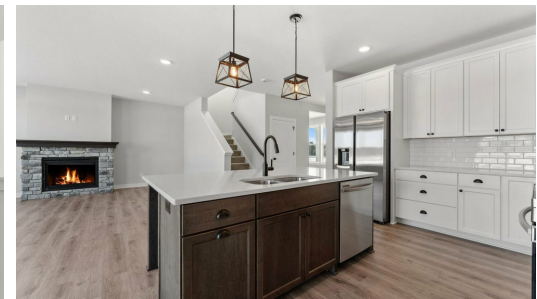
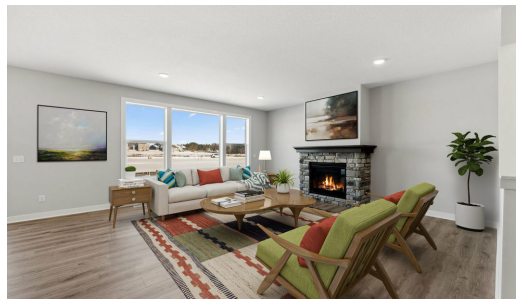


QUESTIONS?  
651-289-6800

Available Now



## Step into the Sutherland

Step into the Sutherland! Be greeted by a den in the front of the home perfect for working from home. As you make your way inside, you'll come across the staircase going up and downstairs. The kitchen, dining, and great room come together with large glass windows and tons of natural light. Upstairs includes four bedrooms with one of those being an awesome owner's suite, two bathrooms, and the laundry room. The unfinished basement of this home is incredibly spacious with lots of room to entertain.

### ADDRESS

1523 Creekwood Dr  
New Richmond, WI  
54017

### PRICE

\$549,900

### COMMUNITY

The Creek at  
Gloverdale

### FLOORPLAN

Sutherland

### PLAN DETAILS

4 Bedroom

2 Baths | 1 Half Bath

3 Car Garage

2 Stories

2,551 Sq.Ft.

All prices, promotions, features, options, amenities, floor plans, elevations, materials and dimensions are subject to change without notice. All information is deemed reliable but not guaranteed. Promotion dollars will be applied toward design studio. Promotion varies by community. Talk to new home specialist in the community to learn details. Not to be used toward base price of home, seller's credit, closing cost, and lot premium. Offer valid on purchase agreements signed on new builds executed between the dates of December 4, 2020 and December 31, 2020. Call the Online Sales Counselor at 651-333-4181 for more details or visit a New Home Specialist for further details and important legal disclaimers. Void where prohibited by law. Offers, incentives, and seller contributions are subject to certain terms, conditions, and restrictions. Creative Homes reserves the right to change or withdraw any offer at any time and without notice. Offer may not be redeemed for cash or equivalent. Prices, home-site, and plan availability are subject to change or revocation without prior notice or obligation. Copyright © 2025 Creative Homes. Creative Homes, the Creative Homes logo are US registered service marks or service marks of Creative Homes.