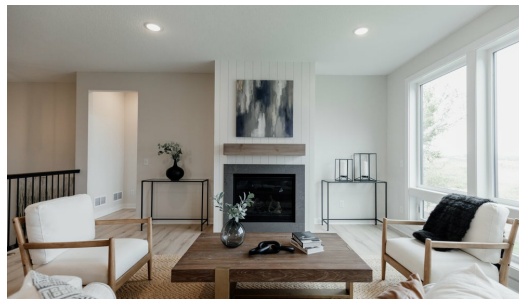
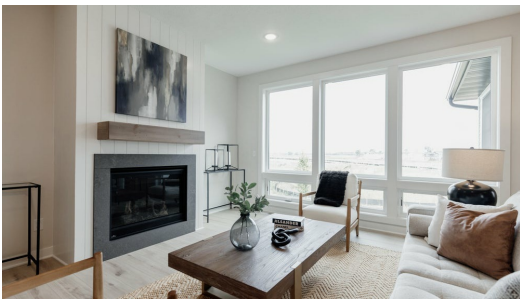


Available April 2025



Step into the Riley

Welcome home to the Riley! A stunning open concept rambler with everything you need on the main level. The primary suite has convenient access to the laundry room and mud room through the spacious walk-in closet. The lower level is a spacious area to entertain! Another bedroom and bathroom are also located on the lower level.

ADDRESS

1529 Creekwood Dr
New Richmond , WI
54017

PRICE

\$529,900

COMMUNITY

The Creek at
Gloverdale

FLOORPLAN

Riley

PLAN DETAILS

3 Bedroom

3 Baths

3 Car Garage

1 Stories

3,262 Sq.Ft.

All prices, promotions, features, options, amenities, floor plans, elevations, materials and dimensions are subject to change without notice. All information is deemed reliable but not guaranteed. Promotion dollars will be applied toward design studio. Promotion varies by community. Talk to new home specialist in the community to learn details. Not to be used toward base price of home, seller's credit, closing cost, and lot premium. Offer valid on purchase agreements signed on new builds executed between the dates of December 4, 2020 and December 31, 2020. Call the Online Sales Counselor at 651-333-4181 for more details or visit a New Home Specialist for further details and important legal disclaimers. Void where prohibited by law. Offers, incentives, and seller contributions are subject to certain terms, conditions, and restrictions. Creative Homes reserves the right to change or withdraw any offer at any time and without notice. Offer may not be redeemed for cash or equivalent. Prices, home-site, and plan availability are subject to change or revocation without prior notice or obligation. Copyright © 2025 Creative Homes. Creative Homes, the Creative Homes logo are US registered service marks or service marks of Creative Homes.