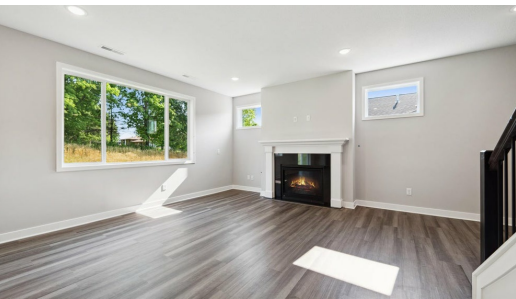


QUESTIONS?
651-360-2814

Available Now



Step into the Henry

The Henry is a lovely single-family home with great quality! Step into the foyer to be greeted by a den and a staircase. As you make your way inside, you'll notice the tons of natural light and the open feel. The kitchen is the heart of the home with a gorgeous island and Samsung appliances. The beautiful primary suite along with three more bedrooms and the laundry room are all upstairs. Downstairs has a spacious family room and the optional fifth bedroom. This plan is brand-new!

ADDRESS

1117 Compton Ave
River Falls, WI 54022

PRICE

\$459,900

COMMUNITY

Oak Hill

FLOORPLAN

Henry

PLAN DETAILS

4 Bedroom

2 Baths | 1 Half Bath

3 Car Garage

2 Stories

2,024 Sq.Ft.

All prices, promotions, features, options, amenities, floor plans, elevations, materials and dimensions are subject to change without notice. All information is deemed reliable but not guaranteed. Promotion dollars will be applied toward design studio. Promotion varies by community. Talk to new home specialist in the community to learn details. Not to be used toward base price of home, seller's credit, closing cost, and lot premium. Offer valid on purchase agreements signed on new builds executed between the dates of December 4, 2020 and December 31, 2020. Call the Online Sales Counselor at 651-333-4181 for more details or visit a New Home Specialist for further details and important legal disclaimers. Void where prohibited by law. Offers, incentives, and seller contributions are subject to certain terms, conditions, and restrictions. Creative Homes reserves the right to change or withdraw any offer at any time and without notice. Offer may not be redeemed for cash or equivalent. Prices, home-site, and plan availability are subject to change or revocation without prior notice or obligation. Copyright © 2025 Creative Homes. Creative Homes, the Creative Homes logo are US registered service marks or service marks of Creative Homes.