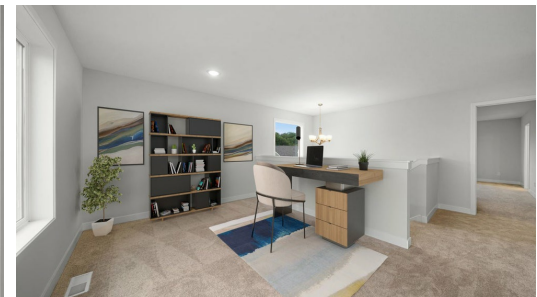




QUESTIONS?
612-322-0985

Available Now



Step into the Sully

The Sully is a stunning single-family home offering tons of glass windows, incredible natural light, and an innovative layout perfect for a family! Step into the foyer to be greeted by a den and staircase. The great room, kitchen, and dining area come together beautifully. Off the kitchen you'll find the hallway of the mud room, the powder bath, and the pantry. This offers great privacy off the open layout! The primary suite along with three more bedrooms and the laundry room are all upstairs. This plan is brand-new! Photos ...

ADDRESS

2926 Elgin Ct
River Falls, WI 54022

PRICE

\$499,900

COMMUNITY

Sterling Ponds

FLOORPLAN

Sully

PLAN DETAILS

4 Bedroom

2 Baths | 1 Half Bath

3 Car Garage

2 Stories

2,596 Sq.Ft.